

SUMMIT.

SUMMIT
MACHINE TOOL
MANUFACTURING



HORIZONTAL BORING MILL

HBMC-4 CNC SERIES

SUMMIT.

Whenever metal must be machined efficiently and with precision, Summit Horizontal Boring Mills provide a cost effective solution. Summit's Series of HBM's incorporate many advanced construction features, utilizing the latest technologies to ensure high performance and to meet the ever increasing demand for greater productivity.

The Summit Model HBMC-4 CNC contains more standard features than any comparable model on the market. Summit HBM's are versatile, durable, heavy-duty, and user friendly machines that will provide you years of trouble-free operation.

KEY FEATURES & ACCESSORIES

- Hydraulic tool clamping
- Automatic Lubrication System
- Hardened and precision ground ways (HRC 50-58)
- Telescoping steel way covers on horizontal ways
- Ball screws on X, Y, W & Z axis
- Coolant system
- Screw Type Chip Conveyor
- Spindle oil chiller
- Portable MPG handwheel
- Fanuc Oi Control is Standard

FANUC Oi CONTROL FEATURES

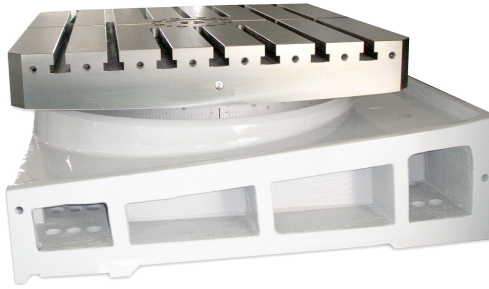
- Full 4 Axis Simultaneous Movement
- User Friendly Environment
- Large Parts Program Capacity
- High Speed Ethernet
- Advanced Interpolation Modes
- Reduced Cycle Times
- Simple Part Programming & Operation
- Extreme Reliability - Maintenance Friendly
- Higher Performance for Greater Profit
- Complete Fanuc System - Control, Drives & Servos
- Digital Servo Technology



Automatic Tool Changer

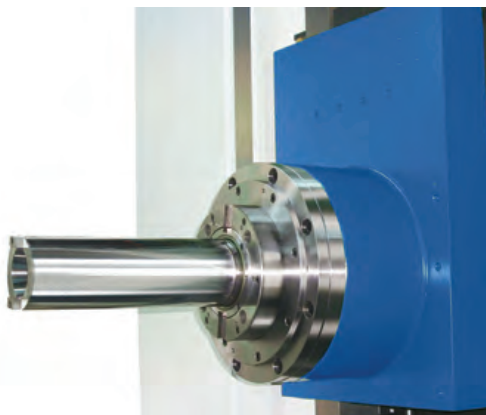
- Standard chain type with 60 tool magazine, provides safety and stable exchange. This enhances machining flexibility and efficiency.
- Loading and unloading tools at the rear of the ATC is available

SUMMIT HBMC-4 CNC HORIZONTAL BORING MILL



Rotary Table

- Servo driven Built-in indexing table 39.4" x 39.4"
- With high precision absolute angle encoder for closed loop feedback
- Minimum input 1 degree, full B-axis 360 degree
- Table load capacity maximum 6,600 lbs
- Hydraulic clamping system

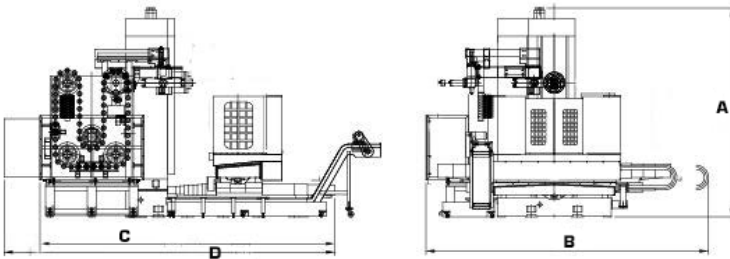


Spindle

- Spindle (4.13" diameter) is mounted on high precision NN type dual roller bearings
- Equipped with a 2-step gear box for automatic spindle speed change
- Oil cooler for the lubrication circuit and temperature control as a standard feature
- Spindle travel (Z-axis travel) is 21.6"
- Air curtain for the spindle effectively prevents fluid or chips from entering the spindle
- Hydraulic clamping for Z-axis

DIMENSIONS AND SPECIFICATIONS

HBMC-4 CNC HORIZONTAL BORING MILL



MODEL	A	B	C	D
HBMC-4	142"	193"	200"	226"

SPECIFICATIONS

SPINDLE

HBMC-4 CNC

Standard	Metric
----------	--------

Diameter of spindle	4.3"	110 mm
Taper of spindle	Cat50	
Number of spindle speeds (2 Programmable Steps)	Infinitely variable	
Spindle speed range	5-2500 RPM	
Spindle Nose to Table Center	-6.8" - 58"	-175mm - 1475mm
Center Line of Spindle to Table Top	0 - 55"	0 - 1400mm

TRAVELS

Headstock vertical - Y axis	55"	1400 mm
Table, cross - X axis	78.75"	2000 mm
Saddle, longitudinal - W axis	45.2"	1150 mm
Spindle - Z axis	19.6"	500 mm

FEEDS

Number of feeds	Infinitely variable	
Range of feeds (X,Y, W Axis)	0.4 - 236 IPM	
Range of feeds (Z Axis)	.04 - 196 IPM	
Rapid traverse (X, W Axis)	590 IPM	
Rapid Traverse (Y Axis)	472 IPM	
Rapid Traverse (Z Axis)	196 IPM	

ROTARY TABLE

Dimensions	39.4" x 39.4"	1000 x 1000 mm
Table Index Positions	360	
Increments	1 degree	
T-slot Width	.875"	22 mm
Max table load	6,600 lbs	3000 kg

MISCELLANEOUS

Main Spindle Motor	30 HP	22 kw
Electrics	220/3/60	
Servo Linear Axis Feed Motor (X,W,Z Axis)	9.3 HP	7 kw
Servo Linear Axis Feed Motor (Y Axis)	8 HP	6 kw
Servo Axis Feed Motor (B Axis)	5.3 HP	4 kw
Dimensions (LxWxH)	193" x 200" x 142"	4900 x 5100 x 3605 mm
Weight	39,600 lbs	17,962 kg

WARRANTY: A copy of Summit Machine Tool Manufacturing L.L.C.'s standard written warranty is attached to each Summit Machine. Call or write to Summit for a copy or for further information concerning Summit's standard warranty. All purchases are subject to Summit's standard written warranty. Specifications are subject to change without notice.

POINT OF OPERATION GUARDING is the responsibility of the end user. For information contact your local OSHA office.

SUMMIT MACHINE TOOL MANUFACTURING, L.L.C.

P.O. Box 1402 • Oklahoma City, OK 73101
405.235.2075 • FAX 405.232.5169

A Subsidiary of LSB Industries, Inc.



FOR MORE INFORMATION CALL **1-800-654-3262**
WWW.SUMMITMACHINETOOL.COM